

COVEEYA
WE KEEP YOU MOVING

EASITRAK

**INSTRUCTION
MANUAL**

EASITRAK

ET300 - ET600 - ET900



The manufacturer does not accept responsibility for any loss, damage to other equipment, injury to personnel or any other circumstance resulting from the use of our equipment. All rights reserved. No part of this publication may be reproduced, stored in a retrieval system, or transmitted in any form or by any means - electronic, mechanical, photocopying, recording or otherwise - unless the permission of the publisher has been given beforehand. © All specifications are subject to change without notice

EASITRAK

MODULAR GRAVITY ROLLER CONVEYOR

	CONTENTS	PAGE
	INTRODUCTION	4
1	SAFETY INSTRUCTIONS	5
2	ENVIRONMENTAL PROTECTION	5
3	CONFORMITY	5
4	TOOLS / PPE / PARTS & PACKAGING LIST	6
	4.1 Tools and Equipment Required	6
	4.2 Recommended PPE	6
	4.3 Packing List	6
5	LIFTING AND SUPPORTING	7 - 8
	5.1 Manual Handling	7
6	ASSEMBLY	8 – 10
	6.1 Assembly Procedure	8
	6.2 Assembly Instructions	9 – 10
7	WARRANTY	11

INTRODUCTION

This product is designed to provide years of reliable service throughout its working life.

The unique design of the **Easitrak**[®] conveyor system is the result of 30 years of research and hands-on experience in the conveyor industry. In depth experience, attention to detail, a commitment to quality and excellent service are the foundations that have built a first-rate reputation and provided complete customer satisfaction.

Please take time to read this Instruction Manual; it will guide you step by step through installation to ensure you get the maximum performance from your conveyor.

This manual covers installation, parts required, maintenance, and warranty conditions.

We, the manufacturers want you to achieve a high level of satisfaction with your **Easitrak**[®] **Conveyor System**. If you have any comments or queries, please do not hesitate to contact us.

Coveya Ltd
St Ivel Way
Bristol, UK
BS30 8TY
+44 (0) 117 956 3131
support@coveya.co.uk

1. SAFETY INSTRUCTIONS

To use this equipment properly, you must observe the safety regulations, the assembly instructions and the operating instructions to be found in this manual. All persons who use and service the equipment have to be acquainted with this manual and must be informed about any potential hazards. Children and frail people must not use the equipment. Children should be supervised at all times if they are in the area in which the equipment is being used.

It is also imperative that you observe the accident prevention regulations in force in your area. The same applies for general rules of occupational health and safety.

The manufacturer shall not be liable for any changes made to the equipment or for any damage resulting from such changes.

Caution:

1.1. Read all instructions.

1.2. Prior to assembling your conveyor check components against parts list to ensure that there are no shortages, the assembly should not commence unless all items are present.

2. ENVIRONMENTAL PROTECTION

Recycle unwanted materials instead of disposing them as waste. All parts and packaging should be sorted, taken to the local recycling centre and disposed of in an environmentally safe way.

3. CONFORMITY

Easitrak conforms to relevant safety standards in the country in the EU where the product is purchased. The machinery, taking into account the state of art, complies with, or is designed and constructed so far as it is possible to comply with, the relevant health and safety regulations.

4. TOOLS / PPE / PARTS & PACKING LIST

4.1 Tools and Equipment Required

- Adjustable spanner
- Tape measure
- Offset wrench or socket set
- 13mm socket & spanner
- Cordless screwdriver
- Temporary support frames/trestles

4.2 Recommended PPE

- Hard hat
- Gloves
- Goggles
- Safety footwear

4.3 Parts & Packing List

- Supplied separately

5. LIFTING & SUPPORTING

5.1 Manual Handling

- Sections & components over 50kgs will require mechanical handling



WARNING!
OBSERVE CORRECT LIFTING PROCEDURES AT ALL TIMES.
MIND YOUR BACK

FAMILIARISE YOURSELF WITH THE WEIGHT OF EACH SECTION



Sections – Easitrak 300	Length	Width	Depth	Weight exc. rollers
0.6m Section	600mm	338mm	135mm	6kg
1.2m Section	1200mm	338mm	135mm	14kg
2.4m Section	2400mm	338mm	135mm	28kg

Sections – Easitrak 600	Length	Width	Depth	Weight exc. rollers
0.6m Section	600mm	638mm	135mm	8kg
1.2m Section	1200mm	638mm	135mm	16kg
2.4m Section	2400mm	638mm	135mm	30kg

Sections – Easitrak 900	Length	Width	Depth	Weight exc. rollers
0.6m Section	600mm	938mm	135mm	12kg
1.2m Section	1200mm	938mm	135mm	24kg
2.4m Section	2400mm	938mm	135mm	45kg



WARNING!
ENSURE THAT YOUR CONVEYOR IS CORRECTLY AND SAFELY
LIFTED AT ALL TIMES. ENSURE THAT NOBODY IS UNDERNEATH
THE CONVEYOR WHEN IT IS BEING LIFTED



6. ASSEMBLY

6.1 ASSEMBLY PROCEDURE

Your conveyor has been delivered to you on pallets. (Unless supplied ready assembled)

After opening the pallet you will have all the parts required to complete your conveyor assembly.

Before you start.....read through instructions carefully and check that all the items listed on your Parts & Packing list have been supplied. If any items are missing, contact your supplier immediately prior to assembly.

You will need assistance.....you will find that assistance of at least two other people, and appropriate mechanical handling equipments, will speed the job and make assembly easier and safer

Selecting your site.....choose an area that is firm, level, and capable of supporting the weight of the conveyor and product to be conveyed on the rollers. In addition the base should be suitable to facilitate secure anchoring of the conveyor feet.

You will require unrestricted access to all edges of the conveyor.

6.2 ASSEMBLY INSTRUCTIONS

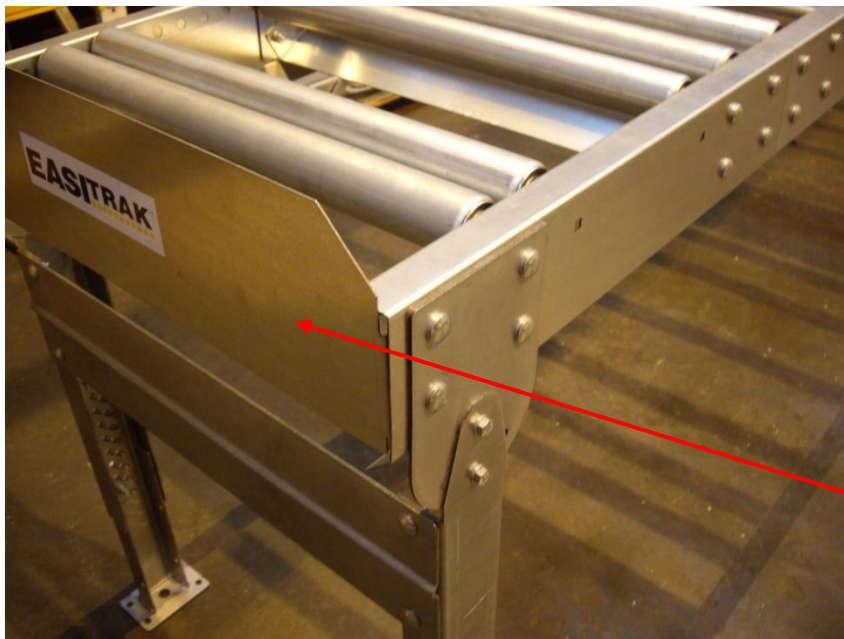


WARNING!

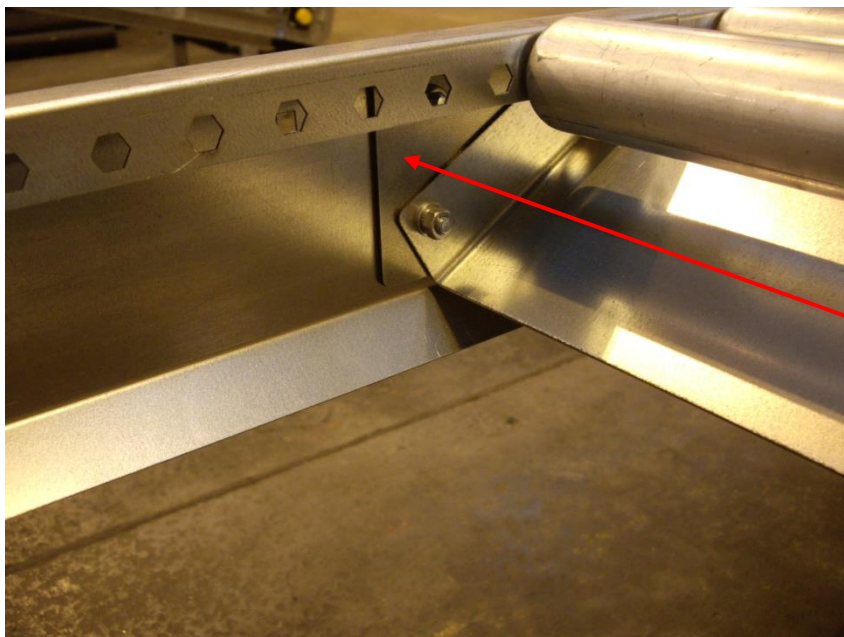
Ensure that the conveyor is correctly supported throughout the entire assembly procedure



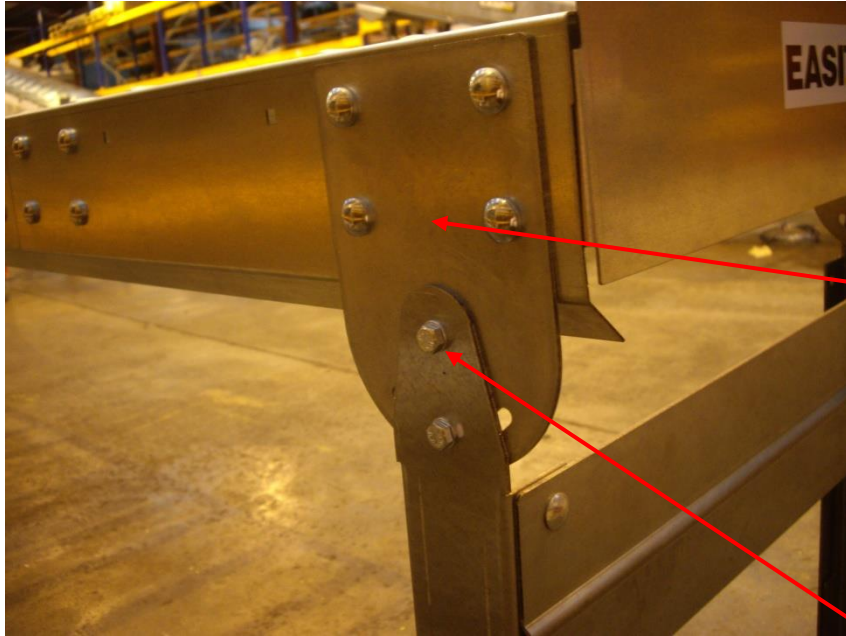
Familiarise yourself with the various parts to assemble your Easitrak conveyor



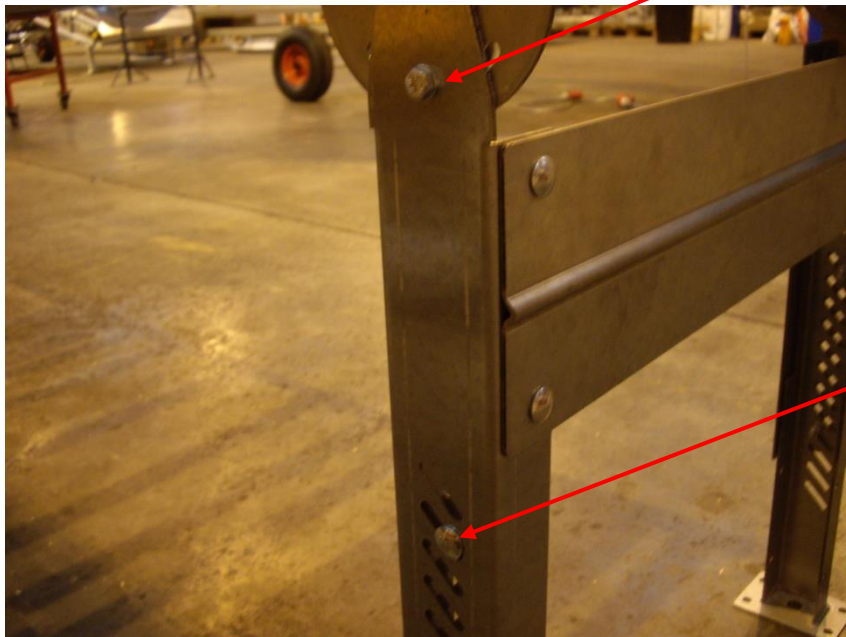
End Plate – will provide a stop if used this way up



Jointing plate – needs to be used in conjunction with all Vee-braces



Leg Assembly – bolt Pivot Mounting Plate to side of conveyor in conjunction with either End Plate or Vee-Brace as necessary



Leg Assembly – assemble legs using M8 x 20 fixings provided and bolt to Pivot Mounting Plate.

Height adjustment is achieved by bolting through the diagonal slots & adjusting as required



WARRANTY

The manufacturer will correct, free of charge, any defects in material or workmanship for a period of 12 months, from date of purchase, subject to the terms and conditions stated below.

TERMS AND CONDITIONS OF WARRANTY

The manufacturer will repair or replace, free of charge, any mechanical or electrical components supplied in conjunction with any conveyors or other equipment carrying a warranty supplied either by the manufacturer or an appointed agent and located within the United Kingdom, or repair or replace any parts thereof which are shown to the satisfaction of the manufacturer to be defective due to faulty materials or workmanship within twelve months from the date of purchase, provided the faulty part(s) are returned, complete and carriage paid, either to the manufacturer or an appointed agent. Any parts removed will become the property of the manufacturer.

This warranty is valid subject to the operator providing proof to the conveyor supplier (if requested) that the recommended Maintenance schedule shown within the Easitrak Instruction Manual has been adhered to.

THIS WARRANTY SHALL NOT COVER ANY FAULT OR DEFECT CAUSED BY:

1. Incorrect installation or operation arising from failure to observe the instructions of the manufacturer or its agents e.g. inadequately rated power source or incorrect voltage or power cables.
2. Physical damage, however it was caused.
3. Repairs or alterations carried out by third parties other than the manufacturer or an authorized agent.

THE FOLLOWING ITEMS ARE EXCLUDED FROM THE WARRANTY:

1. Fair wear and tear

This warranty shall not apply to nor cover any other claims whatsoever. It will, in particular, (without limiting the generality of the foregoing), not cover any claims for conversion or modification or for the cost of repairs carried out by any third party without the prior consent of the manufacturer.

Before free service is given under this warranty the purchaser must provide to manufacturer's satisfaction, proof of date of purchase of the conveyor and quote the serial number(s). If replacement parts are fitted then the original period of warranty will not be extended.

WE KEEP YOU MOVING

COVEYA.CO.UK