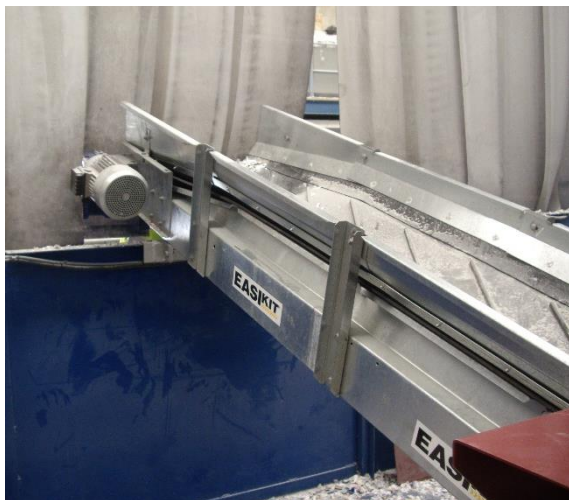


COOVEYA
WE KEEP YOU MOVING

EASIKIT
SIDE GUIDES
INSTRUCTION
MANUAL

EASIKIT

SIDE GUIDES



The manufacturer does not accept responsibility for any loss, damage to other equipment, injury to personnel or any other circumstance resulting from the use of our equipment. All rights reserved. No part of this publication may be reproduced, stored in a retrieval system, or transmitted in any form or by any means - electronic, mechanical, photocopying, recording or otherwise unless the permission of the publisher has been given beforehand. © All specifications are subject to change without notice

EASIKIT SIDE GUIDES

See exploded diagrams on Page 5 and 6.

Each set of conveyor side guides comprises of: -

- a. 1 pair left and right hand Head Unit side guides
- b. 1 pair left and right hand short angled side guides to interface with hopper
- c. 1 pair short intermediate 1m side guide panels to connect with Head Unit side guides
- d. Intermediate 1.2m side guide panels (quantity corresponding to conveyor length)
- e. Upright brackets (quantity corresponding to conveyor length)
- f. 1 pair Head Unit brackets
- g. Rubber skirting and clamp strips (corresponding to conveyor length)
- h. Nut and bolt Fixings

1. Bolt the upright brackets to the side of the conveyor frame.
2. Start at the head end of the conveyor and bolt the panels onto the upright brackets. Once the head end panels are positioned, the short 1m sections should be positioned next overlapping the previously positioned panels onto the brackets and secured.
3. Continue bolting all the remaining intermediate sections working away from the head end of the conveyor fixing each panel in turn. Finally position and fix the hopper interfacing panel into place.



4. Place the rubber skirt underneath the edge of the panels in a continuous strip running along the length of conveyor. Place a clamp strip over the rubber and bolt in place as shown at one end of the conveyor.



5. Pull the rubber strip tight over the length of conveyor and secure the remaining clamps.



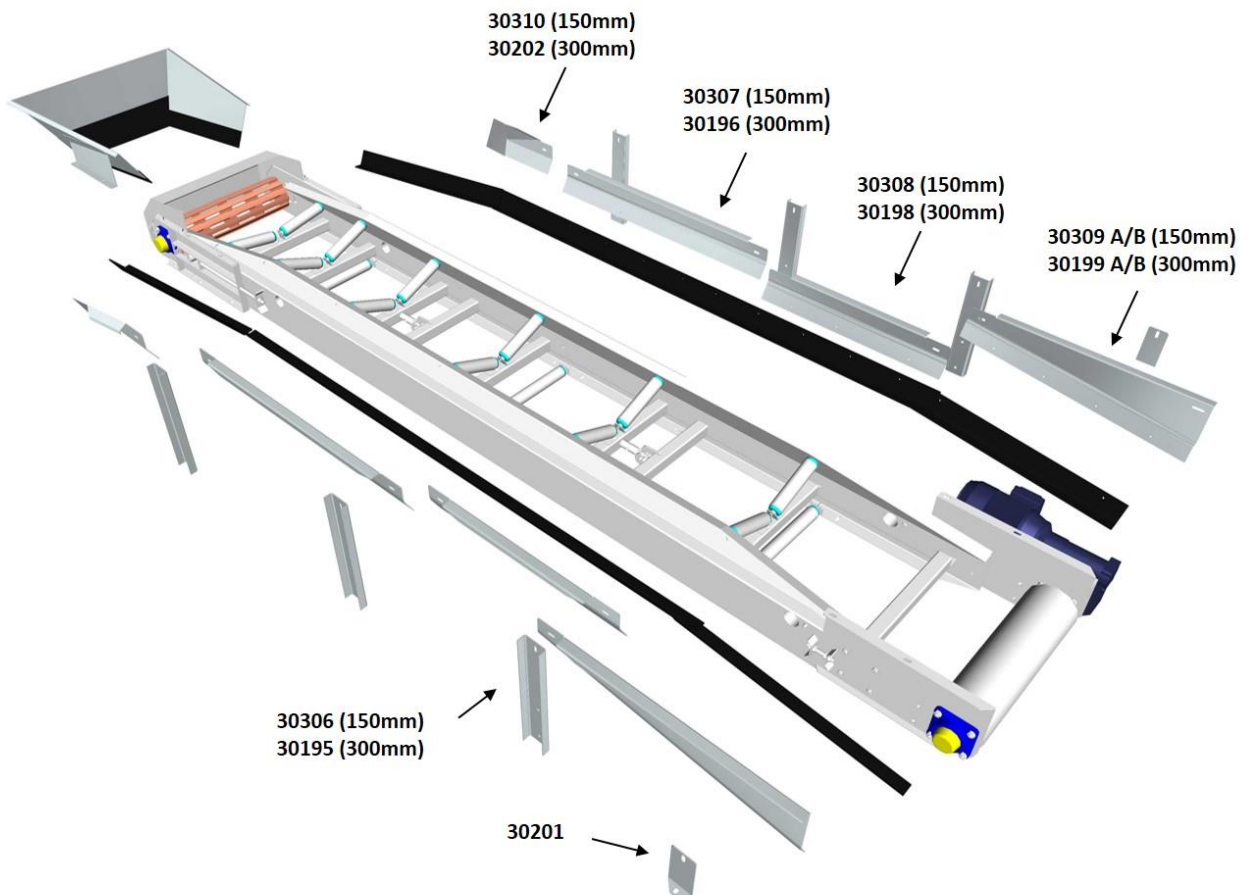
WARNING!

**AVOID JOINING RUBBER SKIRTS WHERE POSSIBLE.
IF SKIRTS DO NEED TO BE JOINED, THEY SHOULD BE OVERLAPPED IN THE
DIRECTION OF THE MOVING BELT UNDER THE CLAMP STRIPS.**



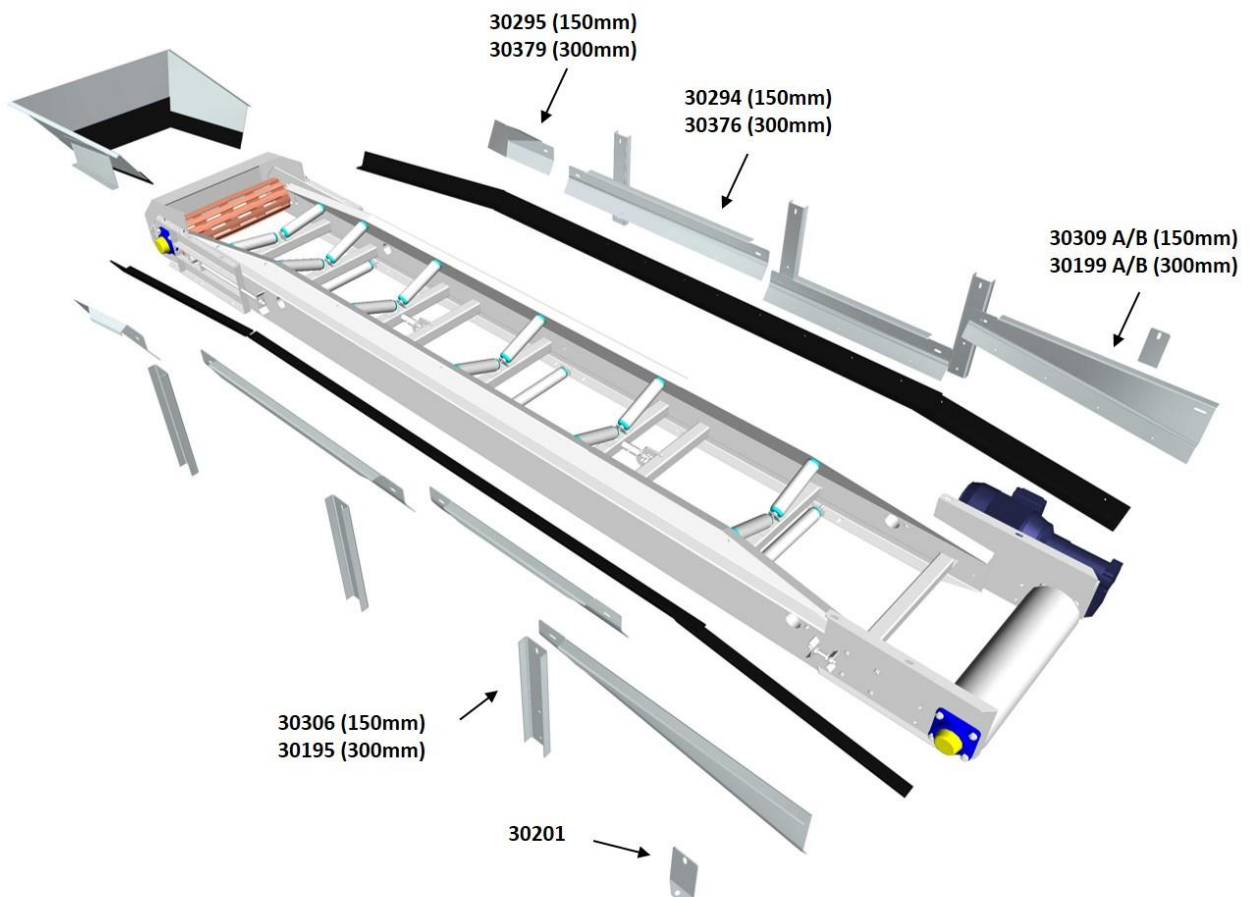
EASIKIT 600, 900, 1200 SIDE GUIDES

EK600, EK900, EK1200 SIDE GUIDES			
150mm	300mm	DESCRIPTION	CLAMP STRIPS
30306	30195	Mounting bracket	n/a
30307	30196	Side panel	30336
30308	30198	Short side panel	30503
30309 A/B	30199 A/B	Head panel	30503
30201	30201	Head panel bracket	n/a
30310 A/B	30202 A/B	Medium Hopper side panels	30340
30310 C/D	30202 C/D	Small Hopper side panels	30300



EASIKIT 450 SIDE GUIDES

EK450 SIDE GUIDES			
150mm	300mm	DESCRIPTION	CLAMP STRIPS
30306	30195	Mounting bracket	n/a
30294	30376	Side panel	30302
30309 A/B	30199 A/B	Head panel	30503
30201	30201	Head panel bracket	n/a
30295 A/B	30379 A/B	Hopper side panels	30297





WARRANTY

The manufacturer will correct, free of charge, any defects in material or workmanship for a period of 12 months, from date of purchase, subject to the terms and conditions stated below.

TERMS AND CONDITIONS OF WARRANTY

The manufacturer will repair or replace, free of charge, any mechanical or electrical components supplied in conjunction with any conveyors or other equipment carrying a warranty supplied either by the manufacturer or an appointed agent and located within the United Kingdom, or repair or replace any parts thereof which are shown to the satisfaction of the manufacturer to be defective due to faulty materials or workmanship within twelve months from the date of purchase, provided the faulty part(s) are returned, complete and carriage paid, either to the manufacturer or an appointed agent. Any parts removed will become the property of the manufacturer.

This warranty is valid subject to the operator providing proof to the conveyor supplier (if requested) that the recommended Maintenance schedule shown within the Easikit Instruction Manual has been adhered to.

THIS WARRANTY SHALL NOT COVER ANY FAULT OR DEFECT CAUSED BY:

1. Incorrect installation or operation arising from failure to observe the instructions of the manufacturer or its agents e.g. inadequately rated power source or incorrect voltage or power cables.
2. Physical damage, however it was caused.
3. Repairs or alterations carried out by third parties other than the manufacturer or an authorized agent.

THE FOLLOWING ITEMS ARE EXCLUDED FROM THE WARRANTY:

1. Fair wear and tear
2. Rubber and PVC skirting

This warranty shall not apply to nor cover any other claims whatsoever. It will, in particular, (without limiting the generality of the foregoing), not cover any claims for conversion or modification or for the cost of repairs carried out by any third party without the prior consent of the manufacturer.

Before free service is given under this warranty the purchaser must provide to manufacturer's satisfaction, proof of date of purchase of the conveyor and quote the serial number(s). If replacement parts are fitted then the original period of warranty will not be extended.

WE KEEP YOU MOVING

COVEYA.CO.UK