



**UK Manufacturer of Conveyors for**  
Manufacturing | Packaging | Distribution | Logistics | eCommerce

# Our team

Speak to a member of the Coveya team

**T. 0800 915 9195 | E. [sales@coveya.co.uk](mailto:sales@coveya.co.uk)**



**Gareth Herbert**  
Managing Director



**Carsten Herbert**  
Sales Director



**Phil Church**  
Business Development  
Manager



**Winston Herbert**  
Sales Executive



**Ivaylo Petrov**  
Project Engineers



**Chris Matthews**  
Project Engineers



**Magnus Sligo-Young**  
Design Engineer



**Cameo Allan**  
After Sales Support

## OVER THE PAST 30 YEARS WE HAVE WORKED WITH





**Coveya has built a reputation for excellence over the past 30 years and is now one of the most respected conveyor manufacturers and suppliers across the UK and worldwide. We pride ourselves on offering the best in customer care, support and training.**

We have a range of conveyor solutions available for hire which have been designed specifically with the manufacturing, packaging and logistics sector in mind and so from the production of packaging to food distribution and distribution hubs throughout the UK we have the perfect conveyor solution with short lead in times.

Our conveyors can be on site within, on average four weeks and are available for short and long term hire helping you to not only avoid capital expenditure but also utilise our conveyor solutions when and where you need them most. Our conveyors can either be installed to create new lines or to extend what you already have and our expert team offer a seamless service, ensuring that whichever conveyor you choose is fit for purpose and operational when you need it most.

If you are looking for a flexible, efficient, safe and cost-effective way of moving stock we can help.

#### **Our promise to you**

- Conveyors are available for short and long term rental so that you don't need to worry about going to the expense of having to buy one
- We will aim to get your hire conveyor to you within (on average) four weeks from the point of order
- We will deliver a seamless service; from the initial quotation through to delivery, installation, maintenance and outstanding customer care
- Coveya has a real commitment to innovation and investment, making sure we have the right range of conveyors to meet your specific needs
- As the largest and most respected suppliers of rental conveyors in the world we understand the need to make sure you have the right conveyor in place to help you meet your customer expectations
- From dealing with an increase in online sales & returns to food distribution, manufacturing and regional & national logistics we can help.

T. 0800 915 9195 E. [sales@coveya.co.uk](mailto:sales@coveya.co.uk) W. [www.coveya.co.uk](http://www.coveya.co.uk) [linkedin.com/company/coveya](https://www.linkedin.com/company/coveya) [Coveya](https://www.youtube.com/coveya)  
Coveya Unit 1, St Ivel Way, Warmley, Bristol, BS30 8TY



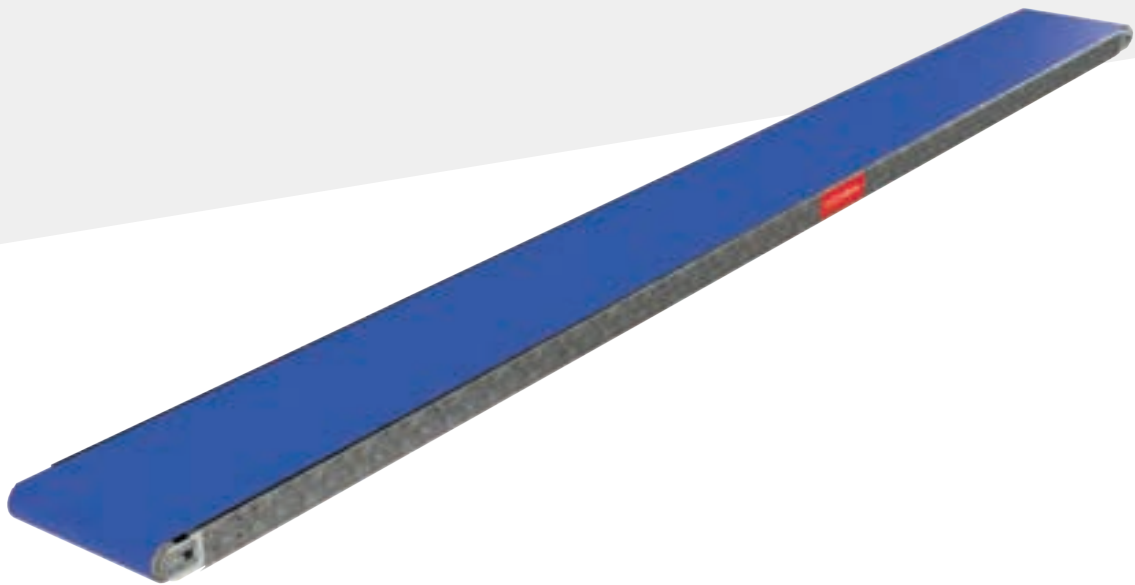
# Belt Conveyor

The Easibelt™

Hire ✓

Purchase ✓

The Easibelt™ is reliable, compact and high-quality, making it perfect for factories and warehouses without the need to design a bespoke conveyor. The Easibelt™ is built using zinc-plated steel and is easy to adapt and reconfigure on your site. The system is engineered for longevity and ease, as it is quick to install and robust in its construction.



| SPECIFICATIONS     |  |
|--------------------|--|
| Industry           | Factories & Warehouses                     |
| Power supply       | 230V or 415V                               |
| Type of material   | Unit handling                              |
| Loading method     | By hand and machine                        |
| Mobile or static   | Static and mobile                          |
| Length             | Over 20 standard lengths from 0.9m – 12.9m |
| Belt width         | 300mm, 450mm, 600mm, 900mm                 |
| Belt speed         | 0.2 - 0.9m/s                               |
| Max. incline angle | 35°  |



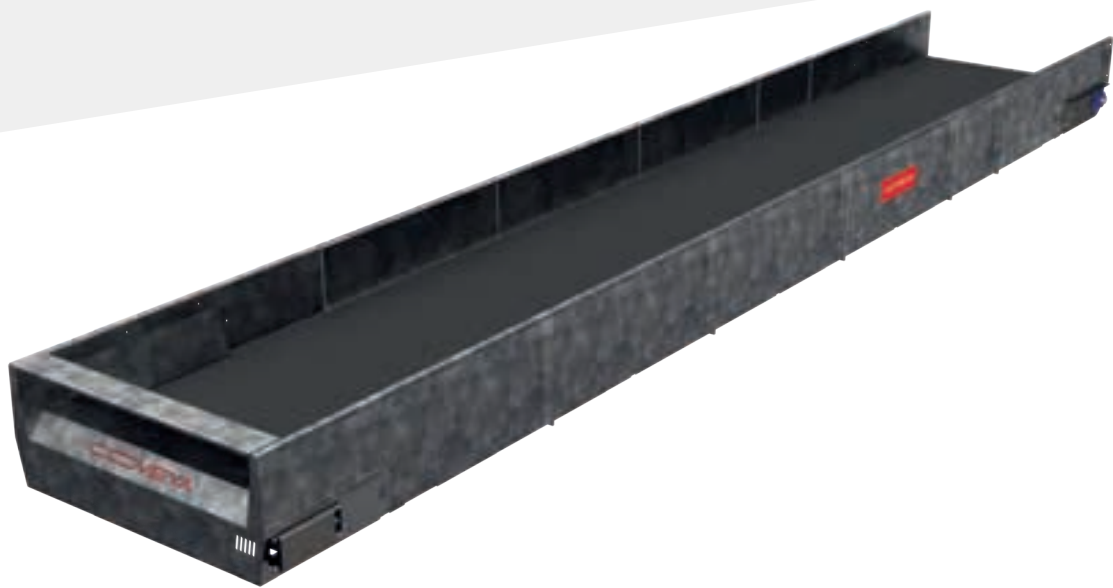
# Belt Conveyor

## The Easikit™ Flatbed

Hire ✓

Purchase ✓

The Easikit™ Flatbed conveyor is available in four widths – 600, 900, 1200 and 1500mm wide – and is predominantly used for dry materials handling. This very robust conveyor is great for baler or compact infeed conveyors and is easily customisable to suit individual site requirements.



### SPECIFICATIONS

|                    |   |
|--------------------|---|
| Industry           | Recycling & distribution                            |
| Power supply       | 415v  |
| Type of material   | Cardboard/paper, Dry waste, Mixed recyclables       |
| Loading method     | By hand, Machine loading, Conveyor feed             |
| Mobile or static   | Static & Mobile                                     |
| Length             | 3.1m – 50m  |
| Belt width         | 450mm, 600mm, 900mm, 1200mm, 1500mm                 |
| Belt speed         | 0.2m/s-1.2m/s                                       |
| Maximum throughput | 20 tons p/h – 100 tons p/h                          |
| Max. incline angle | 40°   |
| Belt Spec          | Plain smooth, Grip top, Chevron, 50mm Flighted Belt |



# Easikit™ Modular Conveyors

Hire ✓

Purchase ✓

The Easikit™ range offers a modular, simple troughed belt conveyor solution for handling loose products, reaching up to 50m on a single belt with adjustable belt speeds of 0.2m/s – 1.2m/s. The Easikit range is respected worldwide and offers flexibility and quality.



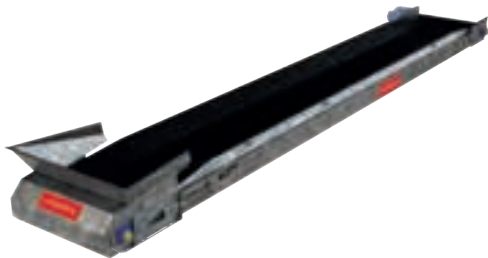
## EASIKIT™ 450: SPECIFICATIONS

|               |                      |
|---------------|----------------------|
| Belt width    | 450mm                |
| Section width | 530mm                |
| Section depth | 310mm                |
| Build         | Hot galvanised steel |



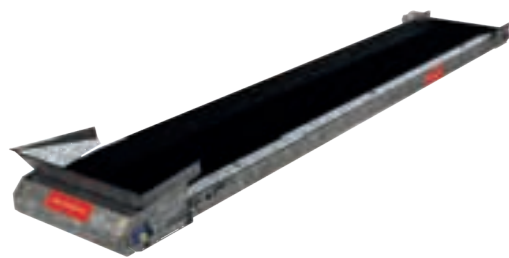
## EASIKIT™ 600: SPECIFICATIONS

|               |                          |
|---------------|--------------------------|
| Belt width    | 600mm                    |
| Section width | 625mm                    |
| Section depth | 285mm                    |
| Build         | Hot dip galvanised steel |



## EASIKIT™ 900: SPECIFICATIONS

|               |                          |
|---------------|--------------------------|
| Belt width    | 900mm                    |
| Section width | 925mm                    |
| Section depth | 285mm                    |
| Build         | Hot dip galvanised steel |



## EASIKIT™ 1200: SPECIFICATIONS

|               |                          |
|---------------|--------------------------|
| Belt width    | 1200mm                   |
| Section width | 1225mm                   |
| Section depth | 285mm                    |
| Build         | Hot dip galvanised steel |

### WHY EASIKIT™?

- ✓ Ideal for restricted access handling
- ✓ Operates at very steep inclines
- ✓ Designed for efficiency and simple installation to minimise downtime
- ✓ Durable, Galvanised construction for rock solid reliability
- ✓ Reach up to 50m in one length



# Gravity Conveyor

## Gravity Roller

Hire ✓

Purchase ✓

The Easitrak™ is a gravity conveyor system that is quick and easy to set up. With a variety of roller widths – 300mm to 1200mm – it's adaptable and comes complete with a pair of end plates that can be used as an end cover or a stop, depending on the way they are fitted. The Easitrak™ is constructed using 50mm diameter steel, bright zinc-plated rollers with steel bearings, and spring-loaded steel spindles for strength and durability.



| SPECIFICATIONS   |   |
|------------------|---|
| Industry         | Factories & Warehouses, Manufacturing, Distribution & Logistics |
| Type of material | Unit handling   |
| Loading method   | By hand   |
| Mobile or static | Static and mobile   |
| Length           | 600mm, 1200mm and 2400mm modules                                |
| Roller width     | 300mm – 1200mm  |
| Roller pitch     | 67mm, 100mm, 133mm or 166mm                                     |



# Lineshaft Conveyor

## Lineshaft Roller Conveyor

Hire ✓

Purchase ✓

**Our Lineshaft roller conveyors offer a versatile, modular, and economical solution which is ideal for transporting rigid light to medium products that are regular in shape and size including boxes, cartons, totes and pallets.**

Products can be accumulated on a lineshaft conveyors, in other words held in a queue, without stopping the upstream movement of other products on the conveyor. This is possible because the drive mechanism design only generates low levels of line pressure. When products are stopped on the conveyor by a mechanical stop the rollers stop rotating and the corresponding O-rings to slip on their spools, without affecting any other rollers elsewhere on the conveyor. One of the main advantages of the Lineshaft Powered Roller Conveyor is the significant number of modular sections that can be driven from one motor via couplings and universal joints. Sections can easily be reconfigured to respond to specific needs and fewer drives are required compared with other conveyors. It's available in powder coated, galvanised and stainless steel and parts are available for immediate dispatch.



| FEATURES   | BENEFITS  |
|--|---|
| Suitable industry applications   | <ul style="list-style-type: none"> <li>• Packaging</li> <li>• Online Retail</li> <li>• Logistics</li> <li>• Warehouse &amp; Distribution</li> <li>• Manufacturing</li> </ul>  |
| Modular Design   | Proven to support a wide variety of applications. It is highly configurable, simple to install and low maintenance.   |
| Fewer motors required  | Reduces costs for installation, maintenance, and power consumption.   |
| Ability to include ancillary items                                       | Highly adaptable/versatile and cost-efficient.  |
| Minimal noise level  | Reduced noise supports a good working environment.  |
| Heavy-duty drives on bends and merges                                    | Increased driving capacity.   |
| Ability for transportation and accumulation on the same conveyor system. | Versatility/adaptability in product handling with optimised productivity.   |
| Ancillary modules available include                                      | <ul style="list-style-type: none"> <li>• Merge Units</li> <li>• Bends</li> <li>• Shuttle cars</li> <li>• Lifts</li> <li>• Turnover units</li> <li>• Stackers and de-stackers</li> <li>• Zero pressure accumulation</li> <li>• Gate units</li> <li>• Chain conveyor transfers</li> <li>• Turntables</li> </ul> |

# Powered Roller

## 24Vdc Power Rollers

Hire ✓

Purchase ✓

**Our 24Vdc roller conveyors offers both transportation and zero line pressure accumulation with integral photocells, without the need for external controls. This type of conveyor with decentralised drives is highly modular, creating the possibility to add / remove zones from conveyor schemes with ease.**

To compliment our range of conveyors we have bend, merge and transfer sections to help create a full system.

| SPECIFICATIONS |  |
|----------------|--|
| Drive options  | We can facilitate various manufacturers, including Rulmeca, Interroll and many others. |
| Drive type     | Poly V, round belt pulley, grooved rollers   |
| Construction   | Stainless steel, zinc plated, galvanised, powder coated                                |
| Bend sections  | 45°, 90°, 180°   |
| Merge sections | 90° belt transfer  |



# Pallet Conveyor

## Roller Pallet Conveyor

Hire ✓

Purchase ✓

**Our pallet conveyors are built to be extremely hard-wearing and highly adaptable to suit your sites individual requirements. This range is a modular 'off the shelf' design and can be supplied on short lead times if required.**

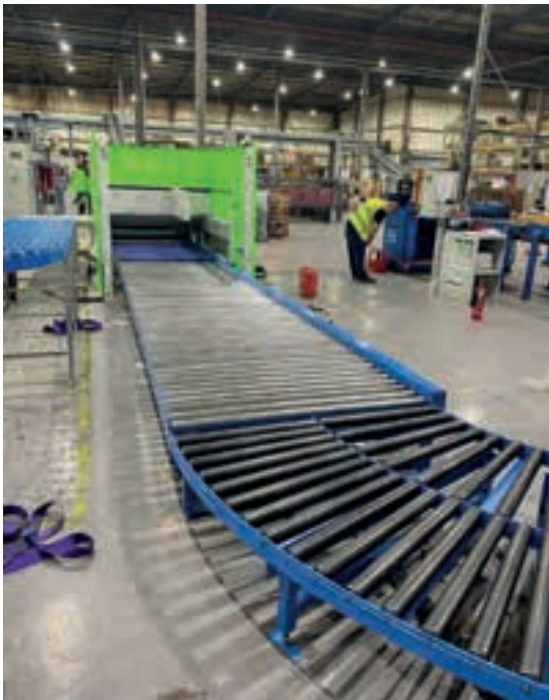
Built to carry weights up to 8 tons and with widths available up to 2000mm our pallet conveyors can be customised to suit the load being conveyed.

For cold store applications, our pallet conveyors can be upgraded to operate in temperatures of -30 degrees Celsius and can run easily without assistance.

To allow for all kinds of applications, we have a standard range of transfer modules that can be added to ensure that the conveyor meets the needs and speed of your business.

### SPECIFICATIONS

|                               |  |
|-------------------------------|--|
| Standard modules in the range | Chain conveyors, Chain transfers, Shuttle Cars, Turntables |
| Construction                  | Stainless steel, zinc plated, galvanised, powder coated    |
| Length                        | 1m – 50m   |
| Roller pitch                  | 103mm – 182mm  |
| Max. capacity                 | Up to 8000kg   |
| Other                         | Zero line pressure   |



# Telescopic Conveyor

## Dock Level Telescopic Loading & Unloading Conveyor

Hire ✓

Purchase ✓

**The Telescopic Gravity Roller is the perfect conveyor for factories, warehouses, distribution, and logistics centres throughout the UK that need to load and unload stock to and from containers.**

### SPECIFICATIONS

|                  |                 |
|------------------|-----------------|
| Type of material | Unit handling   |
| Loading method   | By hand         |
| Mobile or static | Mobile          |
| Roller width     | 600mm and 700mm |
| Minimum length   | 5.5m            |
| Maximum length   | 20m             |
| Height           | 685mm – 1335mm  |



# Telescopic Conveyor

## High Rise Telescopic Unloading Conveyor

Hire ✓

Purchase ✓

**The Coveya High-Rise Telescopic conveyor has been developed as a safe, cost-effective solution for quickly unloading shipping containers or trailers where no level loading dock is available.**

The telescopic conveyor will extend up to 10m inside the shipping container or trailer and will convey cartons under gravity to an offload point at ground level. The High-Rise Telescopic Conveyor can be further extended outside the shipping container by attaching a flexible conveyor extending conveyor.



### KEY BENEFITS

- Significantly reduces time taken to unload loose loaded trailers and shipping containers.
- 10m penetration into any trailer or shipping container.
- Reduces number of personnel required.
- Reduces risk of manual handling injury.
- Fast running PVC rollers utilizing heavy duty steel where needed at the load point.
- Makes the best use of gravity to move varying box weights at the right speed as all stands are fully adjustable using a winding handle.
- Connects on to other conveyors with a drop-down end-stop connector.
- Fully welded construction powder coated in your specified RAL colour.

### SPECIFICATIONS

|   |  |
|---|--|
| Penetration fully extended              | 10m into trailer or shipping container             |
| Load height above bed                   | 900 – 1200mm                                       |
| Discharge height                        | 1100 – 1450mm                                      |
| Rollers                                 | 50mm diameter high impact PVC                      |
| Load rating                             | 50kg per linear metre                              |
| Shortest item that conveyor will convey | 225mm long   |
| End stop plate                          | Yes  |
| Length outside trailer container        | 6500mm   |
| Size when stored                        | One item 4500mm x 1100mm & one item 3100mm x 700mm |

# Expandaveyor

Hire ✓

Purchase ✓

**The PVC Roller Flexible Conveyor has been designed specifically as a cost effective solution for efficiently transporting product. Available on short lead times the expandaveyor is one of the most popular and versatile conveyors and is capable of conveying a range of items, forming complex bends where required and it contracts to a fraction of its extended length for storage.**

The Expandaveyor Conveyor has a wide variety of roller types available as shown below:

| SPECIFICATIONS   |   |
|------------------|---|
| Roller types     | <ul style="list-style-type: none"><li>• PVC Skatewheel</li><li>• Bright Zinc Plated Steel Skatewheel</li><li>• PVC Roller</li><li>• Bright Zinc Plated Steel Roller</li></ul> |
| Width            | 300mm – 1200mm  |
| Construction     | Stainless steel, galvanised, powder coated  |
| Roller diameters | 40mm or 50mm  |
| Roller pitch     | 100mm, 125mm, 150mm   |
| Available as     | Standard duty or 12 axle heavy duty   |
| Length           | 1.5m – 9.5m   |





**COVEYA**  
COVEYA.CO.UK



#### TALK TO THE COVEYA TEAM TO FIND OUT MORE

Call 0800 915 9195 | [sales@coveya.co.uk](mailto:sales@coveya.co.uk)  
Coveya, Unit 1, St Ivel Way, Warmley, Bristol, BS30 8TY

#### COVEYA GLOBAL DISTRIBUTOR NETWORK

|             |  |
|-------------|--|
| Australia   | <a href="http://www.ch-s.com.au">www.ch-s.com.au</a>             |
| Finland     | <a href="http://www.vimelco.fi">www.vimelco.fi</a>               |
| Ireland     | <a href="http://www.glendunplant.com">www.glendunplant.com</a>   |
| USA         | <a href="http://www.interquip.net">www.interquip.net</a>         |
| New Zealand | <a href="http://www.nzconveyors.co.nz">www.nzconveyors.co.nz</a> |
| Lithuania   | <a href="http://www.kadikas.lt">www.kadikas.lt</a>               |