



IMPORTANT INSTRUCTIONS

FOR SAFE USE

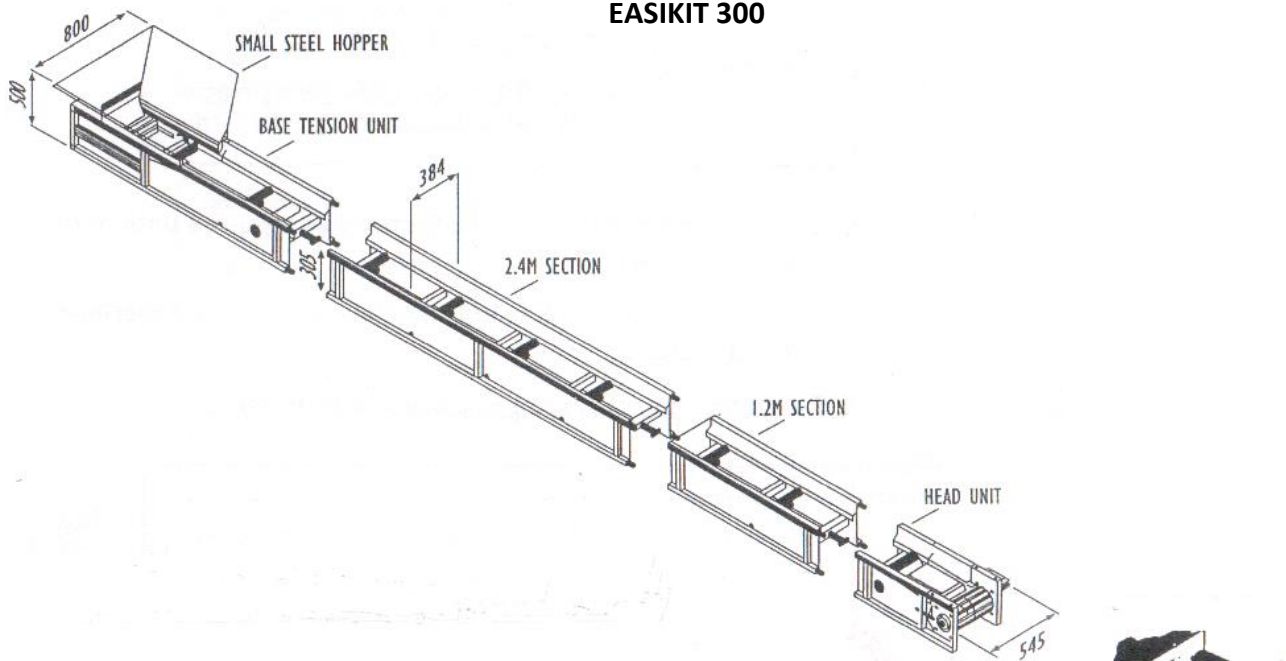
OF

EASIKIT 300/450/600

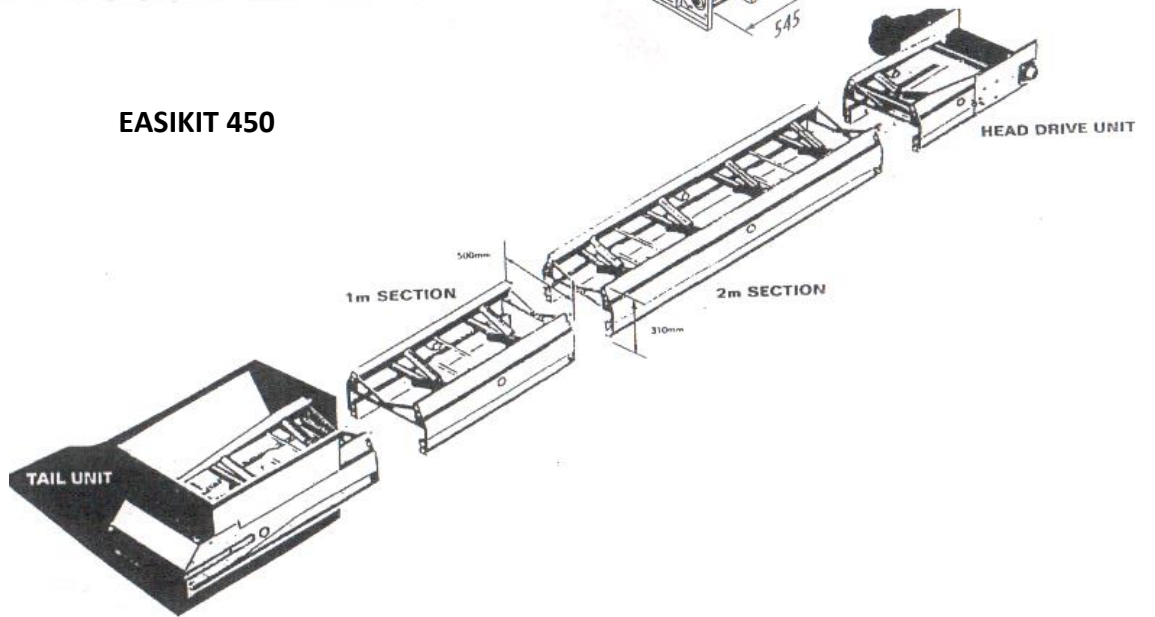
CONVEYORS

This information should be passed to the user of the equipment!

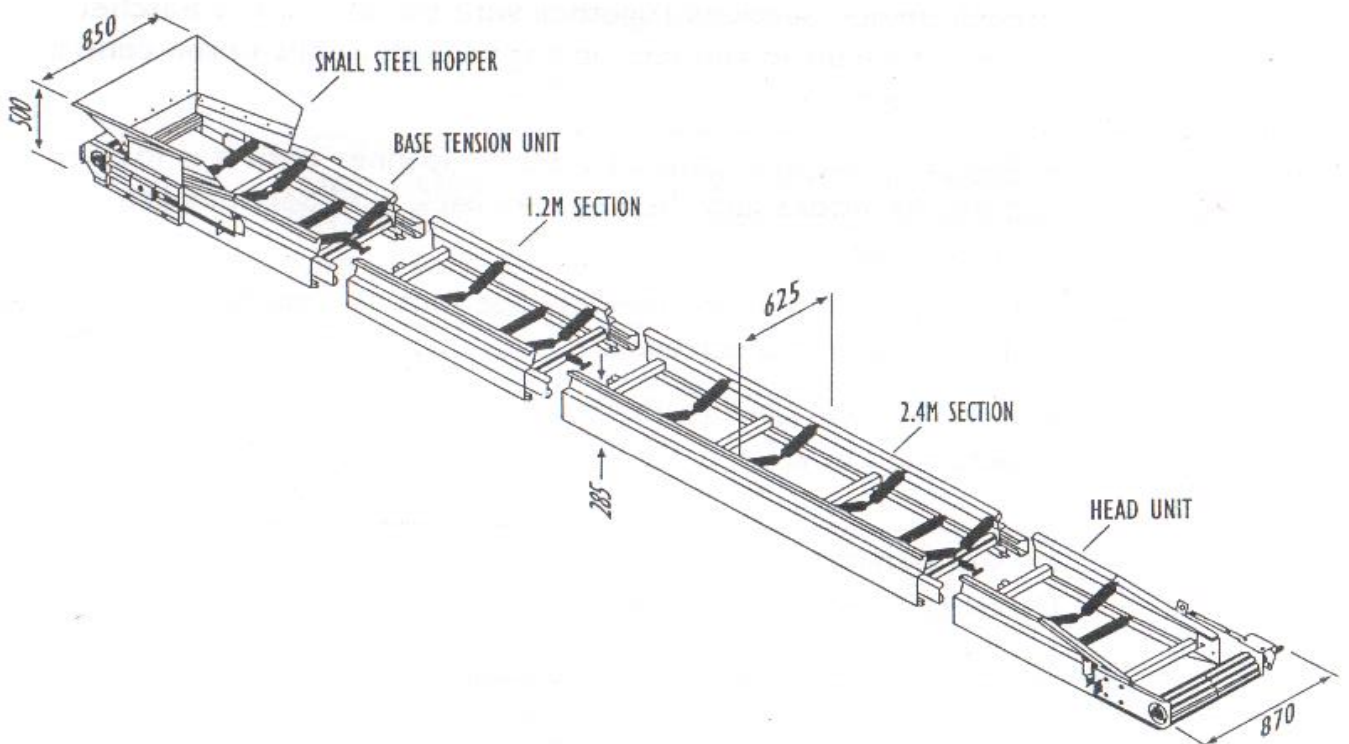
EASIKIT 300



EASIKIT 450



EASIKIT 600



Contact Details

Service:

Tel - 0117 956 3131
Email - support@coveya.co.uk

Hire desk:

Glenn Herbert
Ron Farr
Nathan Farr
Barry Thompson
Carsten Herbert

Tel - 0117 956 3131
Email - sales@coveya.co.uk

EASIKIT 300/450/600 OPERATING INSTRUCTIONS

Daily conveyor safety checks and inspection/cleaning before operating conveyor

Isolate and lock-off supply before inspection.

- If you cannot lock off the power supply, unplug the conveyor from the starter or transformer.
- Visually inspect all external electrical connections.
- Check for materials jammed between the belt and conveyor structure.
- Check for material build up on any of the rollers or side runners.
- Ensure area under and adjacent to, the loading/tail section is clear of debris.
- Check external belt scraper for tension (if fitted).
- Inspect belt & clip joints for damage and wear, also check the tension of the belt, if you find any damage to the belt or joints, inform our service department immediately so it can be dealt with ASAP to avoid unnecessary & expensive damage.
- If the conveyor is scaffolded into position, check the tightness of all scaffold clips. Clear out any rubble or build up of material from the back and underside of the loading area (under the tail section).
- Inspect the condition of the loading boot rubber skirts.
- Check E-stops are operating (if fitted).
- Check head guard is fitted securely (if applicable).
- Check all safety hoarding is in place. (where applicable) Conveyor must be hoarded off over any public access for its entire length; access to any ramps/gantries should be closed during this operation.
- Any hoarding fitted should be cut to give access to the motor and head tracking points so any necessary maintenance work can be carried out, the underside of the hoarding should be made removable, to allow for any clearing of material build up.
- Visually check on all nuts & bolts on rollers and feed boots

Any defects should be reported immediately to our service department

Start up procedure

- Switch on electrical supply (Either by switching on the transformer or by plugging in the power lead).
- Give audible warning and check the discharge area of the conveyor before turning on the conveyor.
- Press the green start button.
- Observe the operation and tracking of the belt.
(For adjusting points, see Fig 3 on page 6 for the type of conveyor you are using)
- Load conveyor steadily and commence operations.

REMEMBER, YOU ARE FEEDING A MOVING BELT, SO FEED ACCORDINGLY AND THE CONVEYOR WILL WORK VERY WELL. OVERLOAD AND YOU WILL CAUSE BREAKDOWNS WHICH IN TURN WILL COST YOU MONEY.

Loading

- Conveyor only to be loaded at the feed boot or at designated loading points.
- Loading only to commence once the conveyor has been started.
- Feed boots to be fed evenly and steadily.
Overloading will inevitably cause jamming and breakdowns, therefore causing downtime on site
- When loading steeper conveyors some rollback will incur. Care must be taken to ensure injury cannot be caused to the operator/loader by large lumps coming off the end of the conveyor.

Shut down procedure

- Ensure belt is emptied, except in emergency stop conditions.
- Press the stop button
- Then switch off the power at the control isolator switch on contractors power supply. Transformers should be switched off at the end of the working day.

Maintenance

Keep the conveyor clean, particularly under and around the loading section.

Belt

- Check belt tension and adjust if necessary by evenly tightening adjusting nuts situated either side of the conveyor tail section. (See Fig 3 - Below)
- The correct tension is the minimum required to maintain drive to the belt.

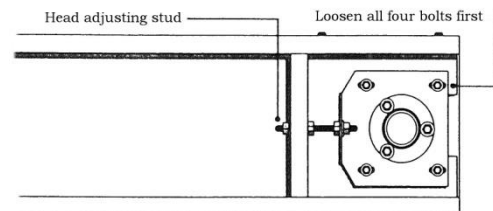
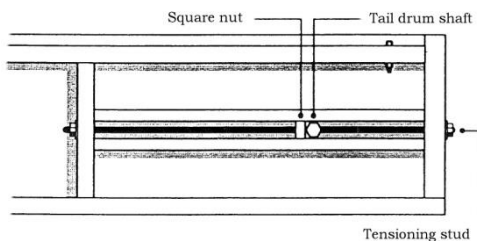
OVER TENSIONING WILL CAUSE BREAKDOWNS THEREFORE DOWNTIME!

Gearbox

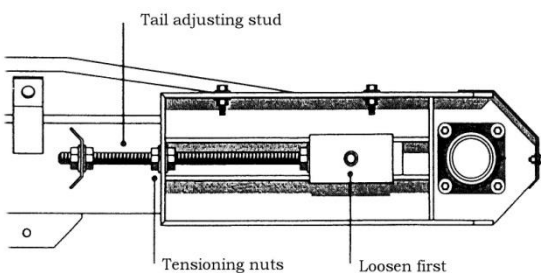
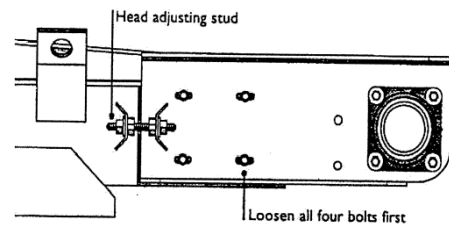
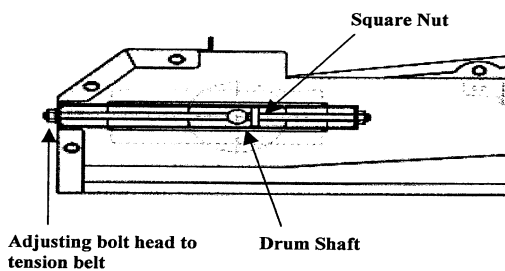
- Lubricated for life; check oil seals on output shaft for leaks.
- If the gearbox starts leaking please contact our service department immediately.

Fig.3

EASIKIT 300 TENSIONING & TRACKING POINTS



EASIKIT 450 TENSIONING & TRACKING



THE HEAD UNIT TRACKING IS IDENTICAL ON THE EASIKIT 450/600

EASIKIT00 TENSIONING & TRACKING POINTS

Trouble shooting

Belt tracking over to one side at the tail section

Stop the conveyor and **isolate power supply**. Remove the feed boot, release the tension off of the belt and ensure there is no build up around the tail drum or any stones trapped between the drum and framework, then test to ensure the drum runs freely. Also carry out visual check on bearing condition (any play or noise) and if you find there is a problem contact our service department who will arrange for a visit. If no problem is found, tension the belt and connect the power and switch on, whilst the belt is running check the tracking and adjust as necessary to centralize the belt on the roller (see Fig 2 on page 9), switch off and refit the feed boot.

Belt tracks over at the head section

Stop the conveyor and **isolate power supply**. Check the head unit for any build up around the head drum or rollers and clear if found. Loosen the four locating bolts (see Fig 3 on page 6, do not completely undo the nuts) and make the necessary adjustments to centralize the belt (see Fig 1 on page 9), start the conveyor and check the position of the belt and make any final adjustments, retighten the four locating bolts and lock off the adjusting stud.

Drive operating but the belt is stationary

Isolate power supply. Check moving parts are free from obstruction. Tension the belt by adjusting the tension bolts evenly on the tail section.

(See Fig 3 on Page 6)

Restore the power and institute the start up, check belt tracking and adjust as necessary.

Motor cuts out

Isolate power supply. Check that nothing has jammed any moving parts, particularly behind loading back guard. Contact our service department immediately.

UNDER NO CURCUMSTANCE SHOULD YOU REPEATEDLY TRY TO START THE CONVEYOR, AS THIS WILL CAUSE SERIOUS MOTOR DAMAGE!

Starter does not work

Isolate power supply. Check that the main fuse has not tripped, check the power lead to ensure that no damage has occurred, unplug the lead from the power socket, a competent electrician could check for loose or disconnected wires within the plugs and sockets. If after this has been done and you have reconnected the power it still fails to work, contact our service department for assistance.

Starter clicks but motor does not work

Isolate power supply. Check the plug from starter to motor for any loose wires, check the wire for any damage. If damage has occurred or there is no apparent damage, contact our service department for assistance.

Material jammed in conveyor under the receiving boot

Isolate power supply to the conveyor. If the item cannot be removed easily contact our service department for assistance.

Noise

If the conveyor starts to make any form of noise other than the normal operational noise, **stop and isolate** the conveyor and check for something jamming the conveyor. If you find anything, remove it, if the noise persists, contact our service department for assistance.

FIG. 1

Belt Tracking to one side at the discharge point.

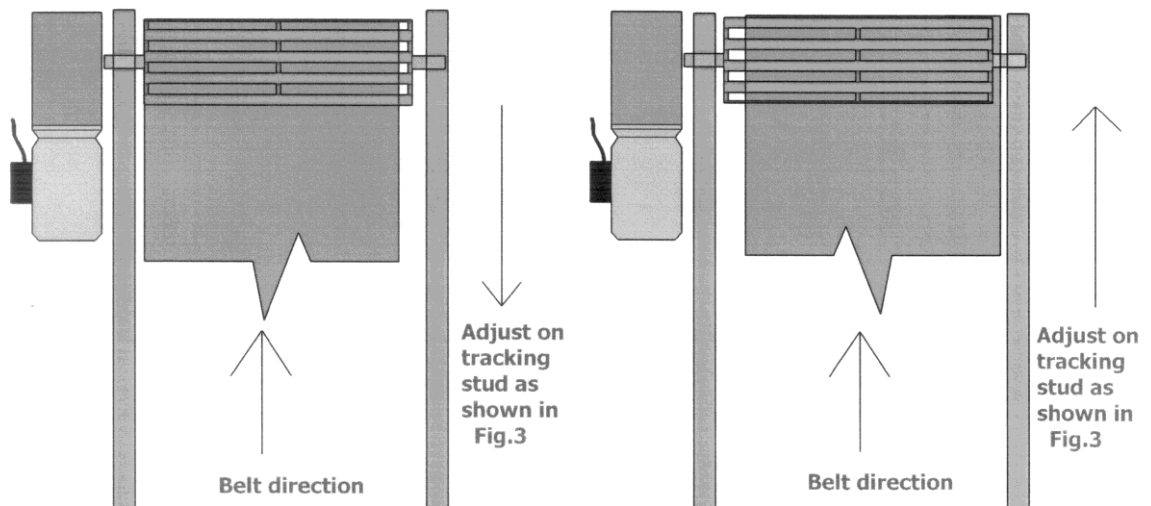
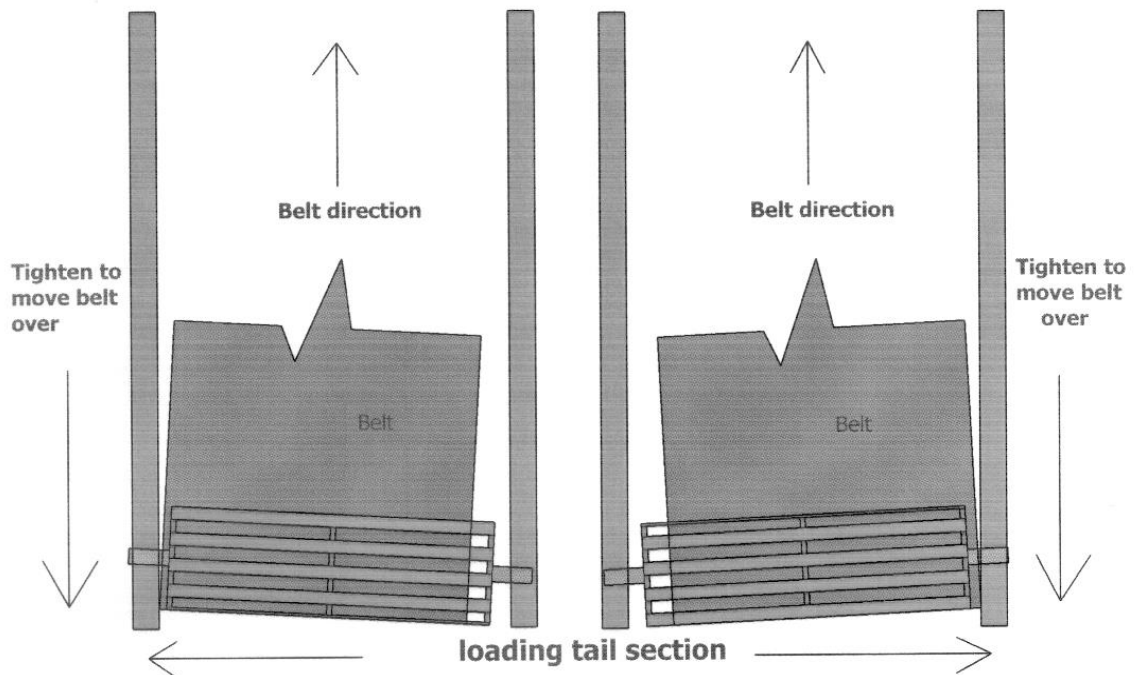


FIG. 2

Belt Tracking to one side at the loading point.



Weekly service checks

- 1) Feed boot bolts – physically check tightness.
- 2) Head guard bolts (if applicable) – physically check tightness.
- 3) Return roller bolts (if applicable) – physically check tightness.
- 4) Electric leads – physically check for damage to cable.
- 5) Electric plugs & sockets – physically check cable entry and for any damage.
- 6) Motor – check for and damage to casing & cables etc...
- 7) Gearbox – check for any damage or leaking oil.
- 8) Run conveyor and check rollers are turning.
- 9) Plus all daily checks.

Week	Date	Name	Checked item (✓/✗)									Defect reported (✓/✗)
			1	2	3	4	5	6	7	8	9	
1												
2												
3												
4												
5												
6												
7												
8												
9												
10												
11												
12												
13												
14												

15													
16													
17													
18													
19													
20													
21													
22													
23													
24													
25													
26													
27													
28													
29													
30													
31													
32													
33													
34													
35													

**Coveya Ltd
St Ivel Way
Warmley
Bristol
BS30 8TY**

T: 0117 956 3131 | E: sales@coveya.co.uk

COVEYA[®]
WE KEEP YOU MOVING